

5454

Shake Freezer

Three Flavor, Pump

Features

Offer three separate shake flavors automatically blended and dispensed from individual spouts.

Freezing Cylinder

One, 7 quart (6.6 liter).

Refrigerated Mix Storage Cabinet

Lower front mix cabinet is independently refrigerated to maintain mix below 41°F (5°C). Door is hinged on the right. One, 15 gallon (57.0 liter) mix tank. Coaxial air/mix pump delivers the precise amount of air and mix to the freezing cylinder.

Indicator Lights

Mix Low light alerts the operator to add mix. Audible alarm may be enabled to sound when mix is low. When the Mix Out light flashes, the unit shuts down automatically to prevent damage.

Electronic Controls

Finished product quality is monitored by Softech™ controls that measure viscosity.

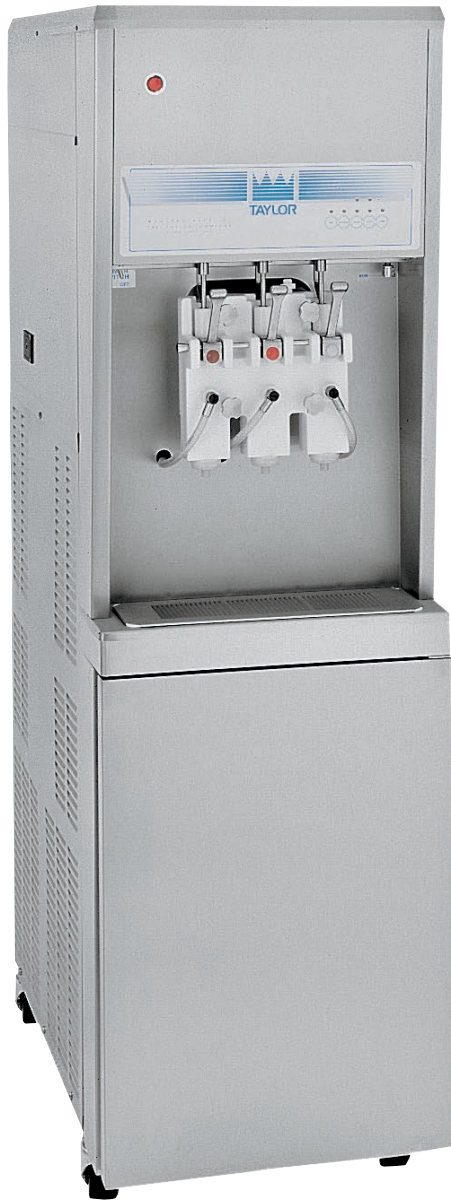
Shake Syrup System

Shake flavors are selected by separate draw handles. Self-contained air compressor delivers shake syrup from three, 2 gallon (7.6 liter) remote syrup tanks (provided). Frozen shake mix and syrup automatically blends to dispense the chosen flavor. Use only single strength syrup, free from pulp and seeds.

Two Locking Casters

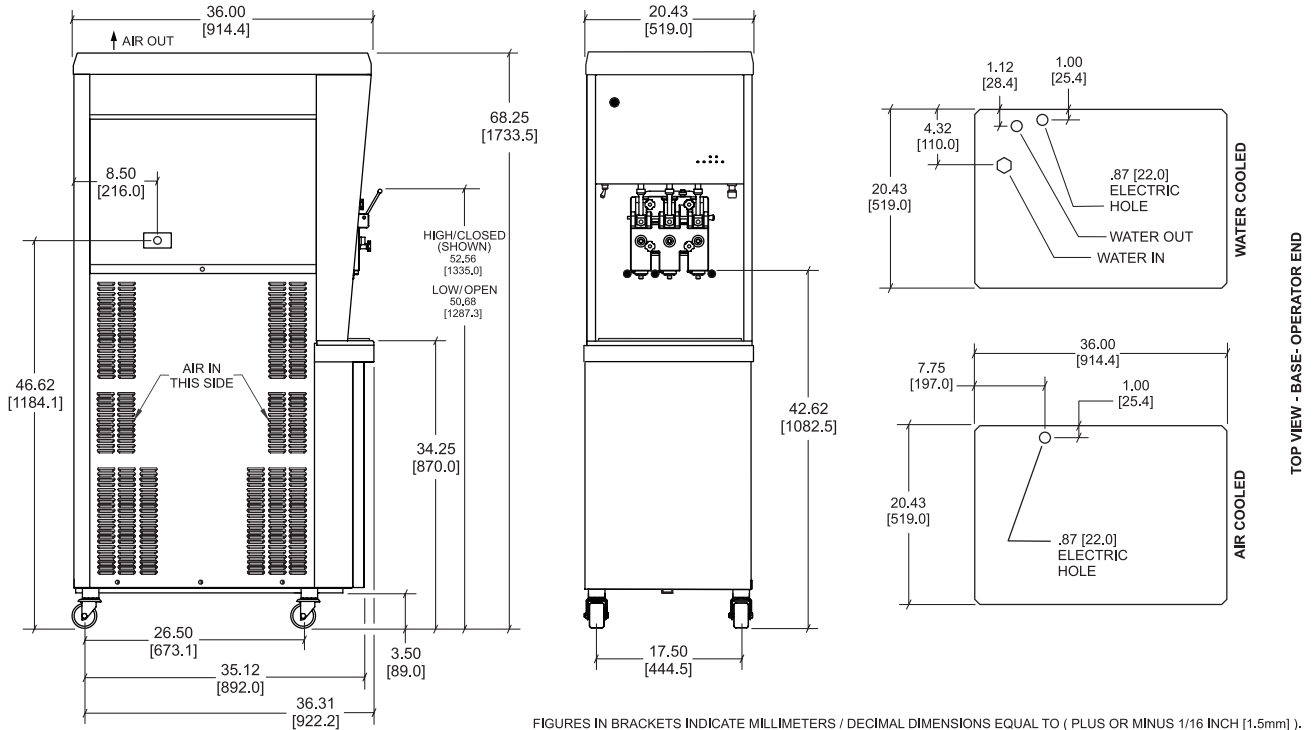
Front casters have a locking feature for operators to lock to maintain equipment in place. The locking casters can be released to move the equipment for cleaning.

An optional syrup cabinet is available to store syrup tanks.



5454 Shake Freezer

5454



Weights	lbs.	kgs.
Net	705	319.8
Crated	810	367.4
	cu. ft.	cu. m.
Volume	54.8	1.8
Dimensions	in.	mm.
Width	20-7/16	519
Depth	36	914
Height	68-1/4	1734
Floor Clearance	3-1/2	89

*Mounted on standard casters

Electrical	Maximum Fuse Size	Minimum Circuit Ampacity	Poles (P) Wires (W)
208-230/60/1 Air	35	30	2P 3W
208-230/60/1 Water	35	29	2P 3W
208-230/60/3 Air	25	22	3P 4W
208-230/60/3 Water	25	22	3P 4W

This unit may be manufactured in other electrical characteristics. Refer to the local Taylor Distributor or availability.

(For exact electrical information, always refer to the data label of the unit.)

Bidding Specs

Electrical: Volt _____ Hz _____ ph _____
 Neutral: Yes No Cooling: Air Water NA

Options: _____

Specifications

Electrical

One dedicated electrical connection is required. See the Electrical chart for the proper electrical requirements. Manufactured to be permanently connected. Consult your local Taylor distributor for cord & receptacle specifications as local codes allow.

Beater Motor

One, 1.0 HP

Refrigeration System

One, 11,000 BTU/hr. R404A.

Mix Cabinet, 1,100 BTU/hr. R404A.

(BTUs may vary depending on compressor used.)

Air Cooled

Minimum 3" (76 mm) around all sides and 12" (305 mm) on top. Minimum air clearances must be met to assure adequate air flow for optimum performance.

Water Cooled

Water inlet and drain connections under side of base 3/8" FPT.

Options

- Remote Syrup Tank Cabinet; Vertical or Horizontal syrup cabinet holds three individually regulated 2 gallon (7.6 liter) syrup tanks. The syrup cabinet must be placed within 5 ft. (1.5 m) of the freezer.
 - Vertical
 - Height: 62-3/4" (1594 mm)
 - Depth: 10" (254 mm)
 - Horizontal
 - Height: 17-14" (438 mm)
 - Depth: 31-1/2" (799 mm)
 - Width: 10" (254 mm)
- Syrup Cabinet Dimensions
 - Vertical
 - Height: 62-3/4" (1594 mm)
 - Depth: 10" (254 mm)
 - Horizontal
 - Height: 17-14" (438 mm)
 - Depth: 31-1/2" (799 mm)
 - Width: 10" (254 mm)

Continuing research results in steady improvements; therefore, these specifications are subject to change without notice.



Taylor Company,
 Rockton, Illinois 61072
 815-624-8333 800-255-0626 Fax 815-624-8000
www.taylor-company.com