



REMOTE AIR-COOLED CONDENSERS

WRC-1 & WCU-600

WRC-1



WCU-600

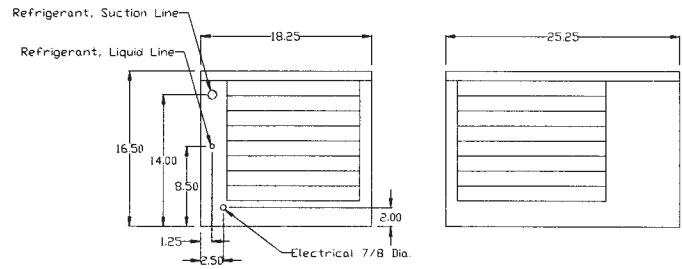
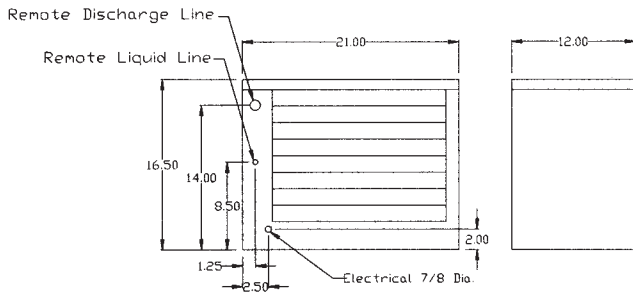


FEATURES:

- Weather-proof housing
- High-efficiency copper and aluminum condenser
- Saves energy
- Eliminates heat and reduces noise from ice maker location
- Reduces air conditioning requirements

WRC-1 REMOTE AIR-COOLED CONDENSER

WCU-600 REMOTE AIR-COOLED CONDENSER



PART NUMBER	DESCRIPTION
638090362-001	Condenser Model WRC-1 (Use with cuber model WCC/WCF 1001R and 1101R)
638090362-002	Condenser Model WRC-1 (Use with cuber model WCC/WCF 1002R and 1102R)
638090690	Condenser Model WCU-600 (Use with cuber model WCC/WCF 700R, 710R and CI-3300)
638090691	Condenser Model WCU-601 (Use with cuber model WCC/WCF 710R, 711R and CI-3300)
638090692	Condenser Model WCU-602 (Use with cuber model WCC/WCF 702R, 712R and CI-3300)

TECHNICAL SPECIFICATIONS:

REFRIGERANT R-404a

CONDENSER FINISH Galvanized

REFRIGERANT LINE SPECS Vertical Drop:
 20' (4.6 m) max
 Vertical Lift:
 20' (10.7 m) max

MAXIMUM LENGTH 55' (16.8 m)

TUBE SIZE..... WRC-1:
 0.5" OD (1.27 cm) +
 0.375" OD (0.93 cm)
 WCU-600:
 0.5" OD (1.27 cm) +
 0.25" OD (0.63 cm)

REMOTE TUBING
 KITS OPTIONAL 20' (6.1 m)
 35' (10.7 m)
 55' (16.7 m)

ELECTRICAL RATING WRC-1:
 208 or 230 V / 60 Hz /
 2 Amps (single phase)
 WCU-600:
 208 or 230 V / 60 Hz /
 2 Amps
 115 V / 60 Hz / 2 Amps
 220 V / 50 Hz / 2 Amps
 (single phase)

CIRCUIT CAPACITY WRC-1: 15 A
 WCU-600: 20 A

MAXIMUM FUSE SIZE WRC-1: 15 A
 WCU-600: 25 A
 (HVac Circuit
 Breaker Required)

AGENCY LISTINGS  

