

# 791

## Soft Serve Freezer

Twin Twist

### Features

Offer all the popular soft serve variations from low or non-fat ice creams to custards, yogurt and sorbet. Serve two separate soft serve flavors, or an equal combination of both in a twist.

#### Freezing Cylinder

Two, 3.4 quart (3.2 liter).

#### Mix Hopper

Two, 14 quart (13.2 liter). Separate hopper refrigeration (SHR) maintains mix below 41°F (5°C) during Auto and Standby modes.

#### Indicator Lights

Mix Low and Mix Out light alerts operator to add mix. Audible alarm may be enabled to sound when mix is low.

#### Electronic Controls

Softechtm is our exclusive microprocessor based master control that regulates refrigeration by measuring product viscosity to maintain consistent quality.

#### Standby

During long no-use periods, the standby feature maintains safe product temperatures in the mix hopper and freezing cylinder.

#### Optional Drain Assembly

A factory installed optional, drain assembly, with funnel, is available to simplify the cleaning process. A drain line, connected under the drip tray connects to a 1" FPT coupling in the base pan to drain rinse water directly into the floor drain.

#### Two Locking Casters

Front casters have a locking feature for operators to lock to maintain equipment in place. The locking casters can be released to move the equipment for cleaning.

#### Freezer Door

A specially designed thermo-plastic door allows quick ejection of product. Push forward on the ergonomic draw handle to dispense. Self-closing draw handles are standard.

#### Door Interlock System

Protects the operator from injury as the beater will not operate without the dispensing door in place.

#### Pull Handles

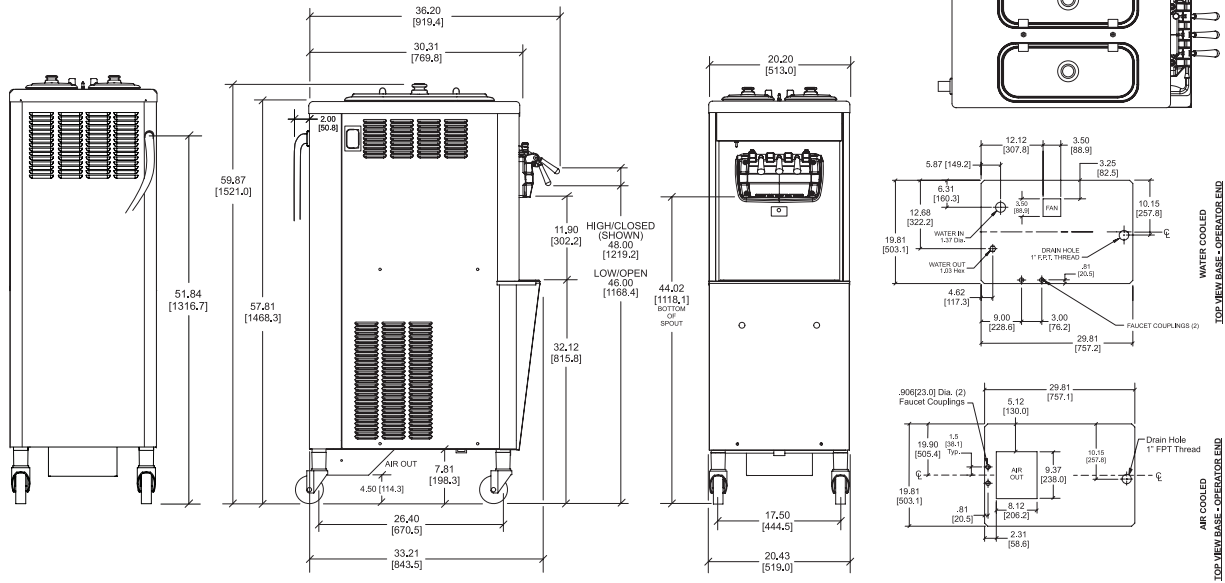
Convenient recessed pull handles for ease in moving the equipment for cleaning.



Shown with optional rear mix lights



Shown with standard pull handles



FIGURES IN BRACKETS INDICATE MILLIMETERS EQUIVALENT TO DECIMAL DIMENSIONS ( PLUS OR MINUS 1/16 INCH [1.5mm] ).

Weights	lbs.	kgs.
Net	527	239.0
Crated	586	265.8
Volume	cu. ft.	cu. m.
	47.3	1.34
Dimensions	in.	mm.
Width	20-7/16	519
Depth (Does not include cord)	33-3/16	844
Height	59-7/8	1521
Floor Clearance	4-1/2	114

\*Mounted on standard casters

Electrical	Total Amps	Supplied with NEMA Cord
208-230/60/1 Air	19.0	L6-30P
208-230/60/1 Water	19.0	L6-30P
208-230/60/3 Air	14.0	L15-20P
208-230/60/3 Water	14.0	L15-20P
220-240/50/1 Air	16.1	----
220-240/50/1 Water	16.1	----
380-415/50/3N- Air	8.2	----

This unit may be manufactured in other electrical characteristics and may have additional regulatory agency approvals. Consult the local Taylor Distributor for other electrical characteristics and agency approvals based on specific electrical and country requirements.

(For exact electrical information and approval marks, always refer to the data label of the unit.)

**Continuing research results in steady improvements; therefore, these specifications are subject to change without notice.**

**Bidding Specs**

Electrical: Volt \_\_\_\_\_ Hz \_\_\_\_\_ ph \_\_\_\_\_  
 Neutral: Yes No **Cooling:** Air Water NA

Options: \_\_\_\_\_

**Authorized Taylor Distributor**

**Specifications**

**Electrical**

One dedicated electrical connection is required. See the Electrical chart for the proper electrical requirements. Unit supplied with cord and plug. Consult the international Taylor distributor for cord & receptacle specifications for 50 Hz. equipment.

**Beater Motor**

Two, 1.5 HP.

**Refrigeration System**

One, 9,500 BTU/hr. R404A.  
 Separate Hopper Refrigeration (SHR), One, 400 BTU/hr. R134a. (BTUs may vary depending on compressor used.)

**Air Cooled**

Minimum 3" (76 mm) around all sides. Install the deflector provided to prevent recirculation of warm air. Minimum air clearances must be met to assure adequate air flow for optimum performance.

**Water Cooled**

Water inlet and drain connections under side of base 1/2" FPT.

**Options**

- Cone Dispenser
- Drain with Funnel
- Draw handles to meet Americans with Disabilities Act requirements
- Draw Valve Lock Kit
- Faucet
- Hopper Agitators
- Rear Mix Lights
- Sneeze Guard
- Syrup Rail Kit (side mount)



750 N. Blackhawk Blvd.  
 Rockton, Illinois 61072  
[www.taylor-company.com](http://www.taylor-company.com)