

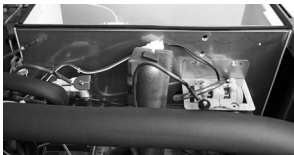


# Marine Model Ice Cube Machine

## Model

- |                                    |                                    |                                    |                                    |
|------------------------------------|------------------------------------|------------------------------------|------------------------------------|
| <input type="checkbox"/> ID-0606WM | <input type="checkbox"/> ID-0906WM | <input type="checkbox"/> ID-1406WM | <input type="checkbox"/> ID-1803WM |
| <input type="checkbox"/> IY-0606WM | <input type="checkbox"/> IY-0906WM | <input type="checkbox"/> IY-1406WM | <input type="checkbox"/> IY-1805WM |

### Stainless Steel Bulkhead



- Stainless Steel:
- Top Cover
  - Side Panels
  - Back Panel
  - Bulkhead
  - Brackets
  - Fasteners



Series i606 ice machine on a MB-3044 bin

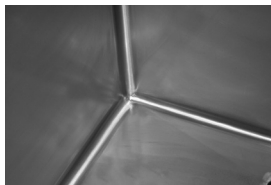
## Marine Ice Machine Features

Four ice machine units available with special Marine specifications. Choose series 606, 906, 1406, or 1800 water-cooled models. Ice production from 660 to 1850 lbs (299 to 839 kg) of ice per day.

- New Isolation switch immediately cuts power to the entire unit.
- Indigo® feature set including automatic cleaning that returns to the ice making process without manual intervention.
- Cupra-nickel condenser adds protection from salt water.
- Completely sealed unit: front, back, top and sides.
- Meets USPHS specifications.

## Warranty

- 5-year parts-and-labor on evaporator.
- 5-year parts and 3-year labor on compressor.
- 3-year parts-and-labor on all other components.



Bin cove corners



Bin leg



Isolation switch

## Marine Ice Bin Features

- Outer cabinet – 18 ga 304 stainless.
- Inner cabinet – 18 ga 304 stainless.
- Radius (cove) corners in liner.
- Stainless steel flanged 6" (15.2 cm) legs.
- Stainless steel ice scoop on stainless cable.
- Fortified water curtain to prevent false bin full when ship pitches.



Ice scoop and chain

Marine Bins		
Model	Dimension W x D x H	Storage Capacity
MB-3044	30" x 34" x 44" 76.2 cm x 86.3 cm x 111.8 cm	397 lbs. 180 kg
MB-4844	48" x 34" x 44" 121.9 cm x 86.3 cm x 111.8 cm	672 lbs. 305 kg

Bin dimensions above do not include the bin leg. Add 4" (10.16cm) to 6" (30.48cm) to the bin height

## Warranty

- 1-year material and workmanship.

## Ice Shape



**Half Dice**  
3/8" x 1 1/8" x 7/8"  
(.95 x 2.86 x 2.22 cm)



**Dice**  
7/8" x 7/8" x 7/8"  
(2.22 x 2.22 x 2.22 cm)



